

WIPX4BVAF

BULLET CAMERA

4MP H.265 IP IR Bullet Camera with 2.8–12mm Auto Focus Lens and Facial Recognition



Key Features

- Maximum resolution: 2592 × 1520
- 50 ~ 70m IR night view distance
- 4MP (2592 × 1520) H.265 full real time coding
- 3D DNR, true WDR, HLC, BLC, Defog, Smart IR and ROI coding
- ICR auto switch, true day / night
- Built-in micro SD card slot, up to 128GB
- DC12V/PoE power supply
- Supports three streams
- Support remote monitoring by smart phones and tablet PC's with iOS and Android OS
- Intelligent analytics
- IP67 ingress protection
- Onvif compliant

The Genie **WIPX4BVAF** is a 4MP IP IR bullet camera with a 2.8–12mm auto focus lens. The camera features intelligent analytics as well as facial recognition when paired with any Genie AI NVR.



Specification

Functions

Remote Monitoring	Web browsing, CMS remote control
Online Connection	Supports simultaneous monitoring for up to 4 users. Supports multi-stream real time transmission.
Network Protocol	UDP, IPv4, IPv6, DHCP, NTP, RTSP, PPPoE, DDNS, SMTP, FTP, SNMP, HTTP, 802.1x, UPnP, HTTPs, QoS
Interface Protocol	Onvif compliant
Intelligent Analytics	Object abandoned / missing detection Region entrance / exiting / intrusion detection (human / vehicle classification), Line crossing detection (human / vehicle classification) Video tampering detection Scene change detection Face recognition and face capture Crowd density detection Heat map Human/vehicle counting, Human tracking
Storage	Network remote storage, micro SD card storage
Smart Alarm	Motion detection, sensor alarm, SD card error, SD card full, IP address conflict, cable disconnection
General Function	Watermark, IP address filtering, video mask, heartbeat, password protection, non-photosensitive switch, image distortion correction
PoE	Yes , IEEE802.3af
IR Distance	50 ~ 70 m

Interface

Network	RJ45
Video Output	CVBS output (BNC x1)
Audio	1CH audio input, 1CH audio output
Alarm	1CH alarm input, 1CH alarm output
Storage	Built-in micro SD card slot, up to 128GB
Hardware Reset	Yes

Others

Ingress Protection	IP67
Power Supply	DC12V / PoE
Power Consumption	< 10W
Operating Environment	- 30 °C ~ 60°C (-22°F~140°F) Humidity: Less than 95% (Non-condensing)
Dimensions	279.5 × 100.3 × 88.9 mm
Weight	Approx. 1.04 Kg

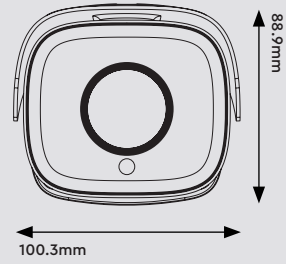
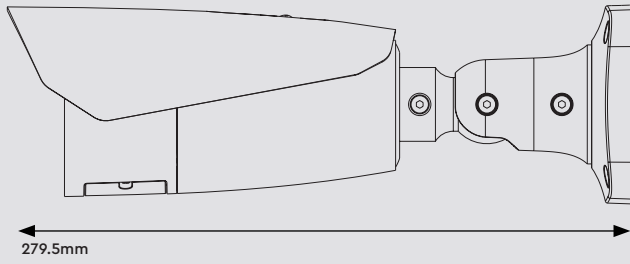
Camera

Image Sensor	1 / 3" CMOS
Image Size	2592 × 1520
Electronic Shutter	1 / 30 s ~ 1 / 100000 s
Iris Type	DC Iris
Minimum Illumination	0.005 Lux @ F1.4,AGC ON, 0 Lux with IR 0.0028 Lux @ F1.2,AGC ON, 0 Lux with IR
Lens	2.8~12mm @ F1.4, motorised zoom lens
Lens Mount	Ø14
Field of View	Horizontal field of view: 94.2°~29.8°
Wide Dynamic Range	120dB
BLC	Yes
HLC	Yes
Defog	Yes
Digital NR	3D DNR
Angle Adjustment	Pan: 0°~360°, Tilt: 0°~90°, Rotation: 0°~360°

Image

Video Compression	Smart H.265, H.265+, H.265, Smart H.264, H.264+, H.264, MJPEG
H.264 Compression Standard	Baseline Profile, Main Profile, High Profile
Resolution	4MP (2592 × 1520), 2K (2560 × 1440), 3MP (2304 × 1296), 1080p (1920 × 1080), 720p (1280 × 720), D1, CIF, 480 × 240
Main Stream	4MP, 2K, 3MP, 1080p, 720p (60Hz : 1 ~ 30fps, 50Hz: 1~25fps) HFR mode: 1080p, 720p (60Hz : 1 ~ 60fps, 50Hz: 1~50fps)
Sub Stream	720p, D1, CIF (60Hz : 1 ~ 30fps, 50Hz: 1~25fps)
Third Stream	D1, CIF, 480 × 240 (60Hz : 1 ~ 30fps, 50Hz: 1~25fps)
Bit Rate	64 Kbps ~ 8 Mbps
Bit Rate Type	VBR / CBR
Audio Compression	G711A / U
Image Settings	ROI, Saturation, Brightness, Chroma, Contrast, Wide Dynamic, Sharpen, NR, etc. Adjustable through client software or web browser.
ROI	Each ROI to be configured separately

Dimensions



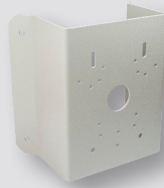
Accessories



WJBBVWP
Water Resistant Junction
Box - White



WIPPPM
Multi Purpose Pole Mount
Bracket - White



WIPPCM
Multi Purpose Corner
Mount Bracket - White