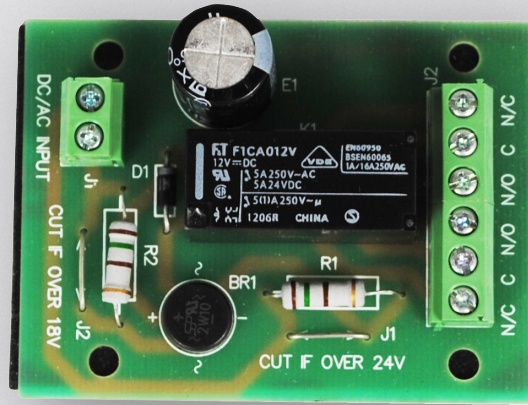


RLY-2P

ACCESSORY

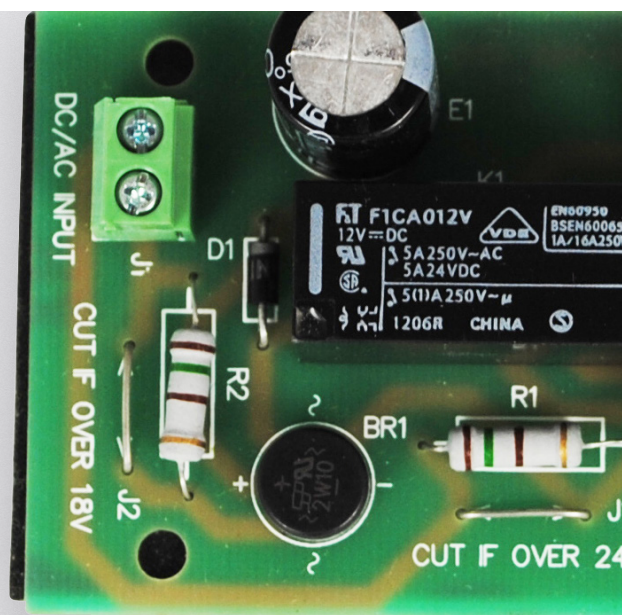
DC12V Double Pole Relay



Key Features

- Operates on AC voltage ranging from 8–30V
- Also operates on DC voltage from 11–30V

The Genie RLY-2P is a DC12V double pole relay module.



Specification

Input	AC8-30V or DC11-30V
Current	45mA @ DC12V
Contacts Rate	5A @ DC24V, 5A @ DC30V
Operating Temperature	-20°C ~ +70°C
Dimensions	67 × 47 × 25 mm
Weight	0.01Kg