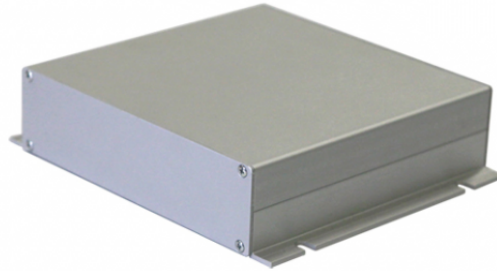




1452

VIP SYSTEM REMOTE CONNECTION INTERFACE



The interface connected to the VIP system allows the system to be managed remotely through the Internet. A router with an Internet connection must be connected to the system.



1452

VIP SYSTEM REMOTE CONNECTION INTERFACE

ELECTRICAL CHARACTERISTICS

PoE power supply	Comelit PoE (56VDC)
------------------	---------------------

GENERAL FEATURES

CE certifications	RoHS II - 2011/65/UE (EN IEC 63000:2018), EMC 2014/30/UE (EN 61000-6-1:2007 , EN 61000-6-3:2007+A1:2011)
-------------------	--

MAIN FEATURES

Height (mm)	44
Width (mm)	165
Depth (mm)	190
Product weight (g)	832
Operating temperature (°C)	-5 ÷ 55
Maximum current absorption (mA)	180

SOFTWARE/FIRMWARE SPECIFICATIONS

IP assignment	AUTO IP, DHCP, STATIC
---------------	-----------------------

GENERAL DATA

Type of finishing materials	Metallic
Product color	Grey
ViP	Yes
Communication ports	RJ45 (Ethernet)
Type of LAN network	Ethernet 10/100 Mbit/s
IP address assignment	Auto IP, DHCP, Static

COMPATIBILITY

Vip system	Yes
------------	-----

MOUNTING/INSTALLATION

Wall-mounted	Yes
--------------	-----



1452

VIP SYSTEM REMOTE CONNECTION INTERFACE

CONNECTIVITY

Type of connections/ports	1xEthernet 10/100 Mbit/s
Ethernet ports (n°)	1