

# GSM PRO AUDIO INTERCOM KITS

## GSM4K/4G & GSM4KCR/4G AUDIOKITS INCLUDING ACCESSORIES



**4G NETWORK  
COMPATIBLE**



**GSM4K-1S/4G/M**



**GSM4KCR-1S/4G/M**



**GSM SYSTEM**



**IDC CONNECTION**



**PROXIMITY**



**CODELOCK**



**RS485 BUS**

Introducing the new 4G GSM PRO audiokits, further expanding the flexibility that has made Videx's GSM series so popular. Designed to work on a 4G mobile network, but are also backwards compatible with both 2G and 3G networks. They are available as 1 or 2 button kits, and can be expanded up to 50 call buttons using our modular design.

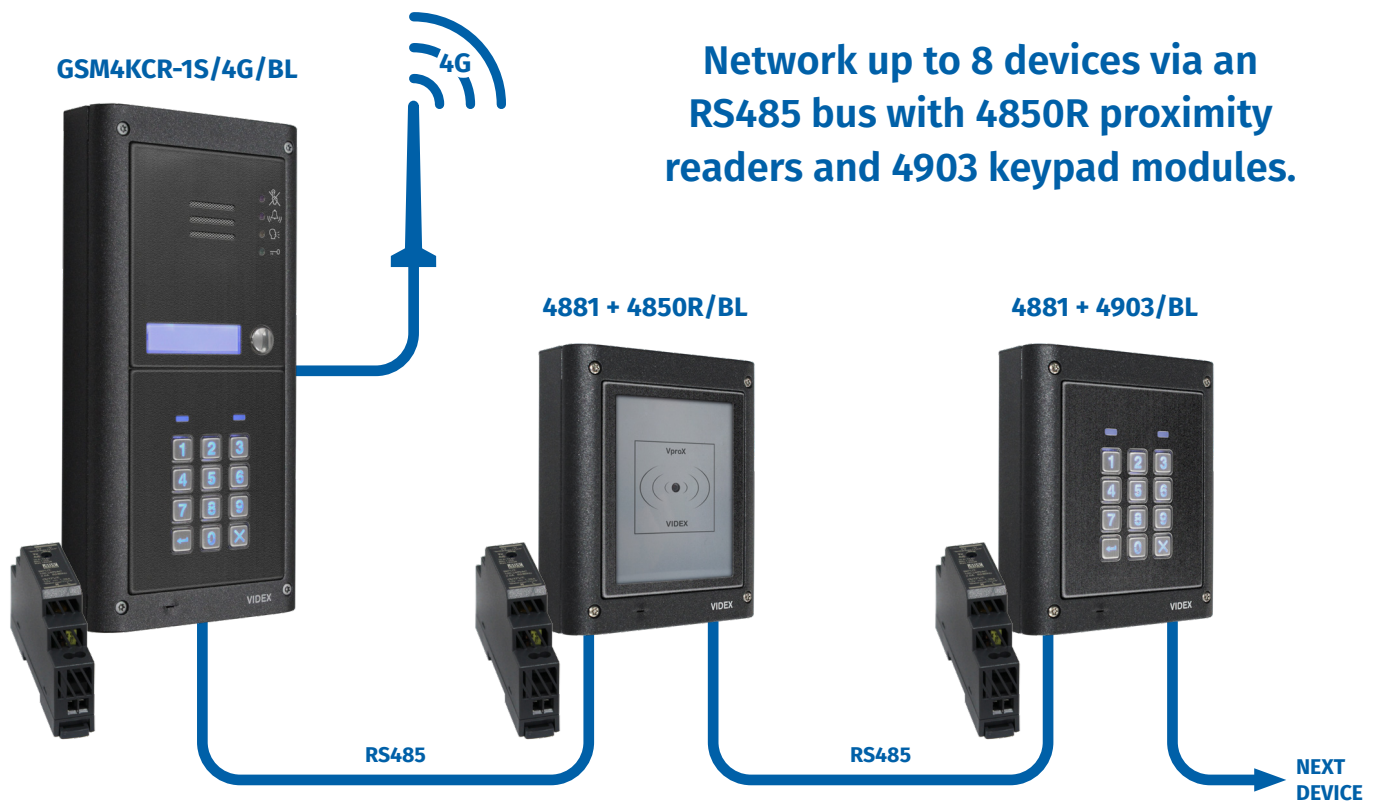
They are manufactured in the familiar modular 4000 series range in a 316 grade stainless steel matt finish (suffix */M*), also available in a gun metal grey finish (suffix */BL*). The GSM audiokits include the 4903 keypad with blue back-lit buttons, that when connected via the RS485 bus, can be programmed remotely.

With RS485 bus connectivity the GSM kits can be expanded to a networkable access control system (up to a total of 8 devices) which can include both proximity using additional 4850R proximity readers and coded access with additional 4903 keypads.

The kits have all the original features of the previous GSM PRO series audiokits where programming and setup can be carried out by either using Videx's new GSM mobile Apps (for both installers and users), by text messages, a web browser or using the GMSK PC software (including a remote "over the air" programming feature).



[www.videxuk.com](http://www.videxuk.com)



Network up to 8 devices via an RS485 bus with 4850R proximity readers and 4903 keypad modules.

## Programming using GSM mobile Apps

Two GSM mobile Apps are available: the **SMS Wizard** for users and the **SMS Wizard PRO** for installers and engineers, both of which are available to download for **FREE** for both Android and iOS devices from Google Play or the App Store.

### SMS Wizard Key Features:

- Compatible with all the latest GSM variants.
- Program up to 10 GSM intercoms.
- Program call numbers (1 primary & up to 3 diverts).
- Program multiple dial to open numbers (up to 1000 permanent and 32 temporary DTO's).
- Program up to 400 permanent access codes (for the 4903 keypad module).
- Program up to 32 temporary access codes (for the 4903 keypad module).
- Program multiple proximity fobs/cards (dependent on GSM model).
- Assign access control timebands for dial to open numbers, access codes and proximity fobs/cards (dependent on GSM model).
- Program up to 10 free access timebands & 10 call timebands (dependent on GSM model).
- Assign access levels for the dial to open numbers, access codes and proximity fobs/cards (dependent on GSM model).
- Monitor GSM events in real time.
- Check the GSM's signal strength and firmware version.
- SMS Wizard App available without registration.

### SMS Wizard PRO Key Features:

- Includes all the same features as the SMS Wizard plus additional features intended for installers and engineers.
- Setup and manage an unlimited number of sites, each with multiple GSM intercoms installed.
- Store site specific details including contact details and site address.
- Diagnostic tools to aid the engineer during installation and for ongoing site maintenance.
- All settings are stored on a Cloud Server and can be shared with multiple devices.
- Remotely monitor GSM events that are also stored on the Cloud Server and view them on multiple smart devices.
- Includes an 'In-App' help section to guide installers through the App's features.
- Access and view the latest GSM manuals.
- Download the SMS Wizard PRO App and register for an account.



SMS Wizard and SMS Wizard PRO comparison table:

GSM App Features ▼	SMS Wizard	SMS Wizard PRO
Call button/Apt. no. programming (inc. primary & divert no's)	✓	✓
Dial to open number programming (permanent and temporary)	✓	✓
Program permanent & temporary codes (for the 4903 keypad)	✓	✓
Program multiple proximity fobs/cards (dependent on GSM model)	✓	✓
Program GSM time settings (inc. call, divert, relays & auxiliary times)	✗	✓
Button 1/divert 1 DTMF tone assignment (dependent on GSM model)	✗	✓
Program call timebands & free access timebands	✓	✓
Assign access levels to dial to open, access codes and proximity	✓	✓
Setup & manage unlimited sites each with multiple GSM intercoms	✗	✓
Store site specific details (inc. contact details & address)	✗	✓
General settings & GSM setup (inc. firmware check feature)	✓	✓
Advanced settings feature (inc. specific settings for each GSM model)	✗	✓
Monitoring GSM events in real time	✓	✓
Diagnostic tools for testing the GSM during install & maintenance	✗	✓
Access to the latest GSM manuals	✗	✓
Share settings across multiple devices	✗	✓

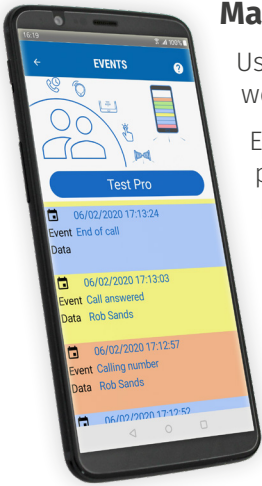
#### 4G GSM PRO Key Features

- 4000 series GSM modules available in a matt 316 grade stainless steel finish or a gun metal grey finish.
- All modules are compatible with the 4000 series surface and flush back box range and also the 4000 series rainshields.
- IDC connection allowing new style 4000 series IDC button expansion modules (**4042 - 4045** and **4042D - 4045D**) to be linked using **CFL17** and **CFL45** IDC ribbon cables.
- 4G GSM PRO module compatible with 2G, 3G and 4G networks.
- 2G, 3G and 4G network status LED indication.
- RS485 bus connectivity.
- Network up to 8 devices (4G GSM PRO module, **4903** and **4850R**) via the RS485 bus connections.
- Program the additional features using Videx's GSM mobile Apps (**SMS Wizard** and **SMS Wizard PRO**), text messages or by the **GSMK** PC software.
- Program the primary number and 3 divert numbers in a single text.
- Program up to 1000 permanent dial to open numbers and 32 temporary dial to open numbers.
- Program multiple dial to open numbers (5 numbers max.) in a single text.
- Program up to 400 permanent access codes.
- Program up to 32 temporary access codes (between 1 and 255 hrs) after which time will automatically be deleted.
- Program up to 10 access control timebands for the dial to open numbers, access codes and proximity fobs/ cards.
- Program up to 10 free access timebands.
- Assign up to 10 access levels for the dial to open numbers, access codes and proximity fobs/cards.



Download the Videx GSM Apps  
for FREE from Google Play  
or the App Store





## Manage GSM Events Remotely

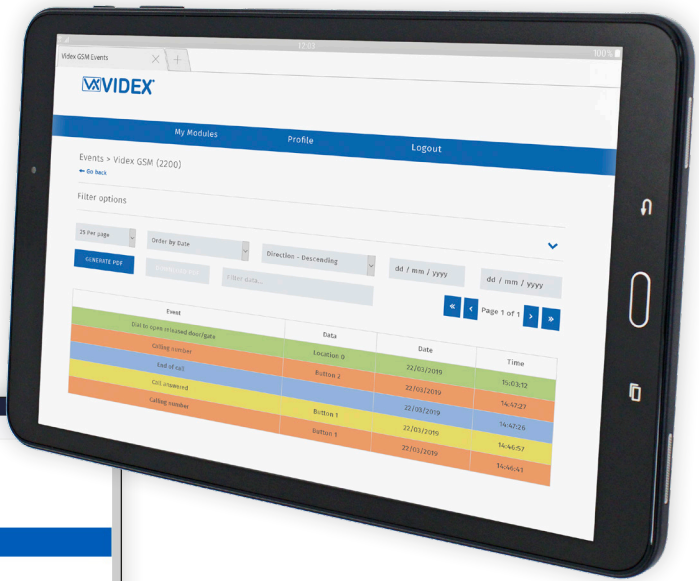
Users can also remotely monitor events in real-time from the 4G GSM PRO intercom using Videx's web browser based events application.

Events are displayed in a colour coded format and can be filtered to find particular events at particular times making it an easy and convenient way to keep track of the calls and access to properties. Also these events can then be viewed on any device such as a tablet, smartphone, laptop and PC.

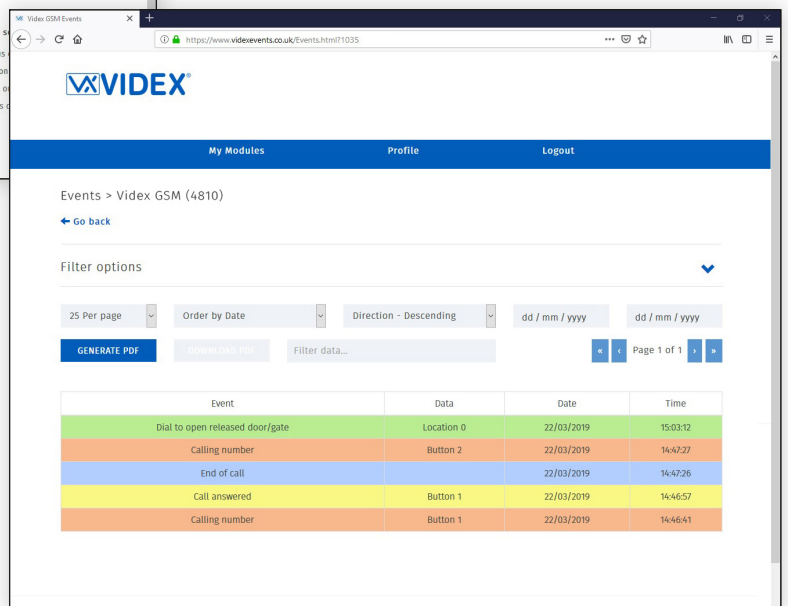
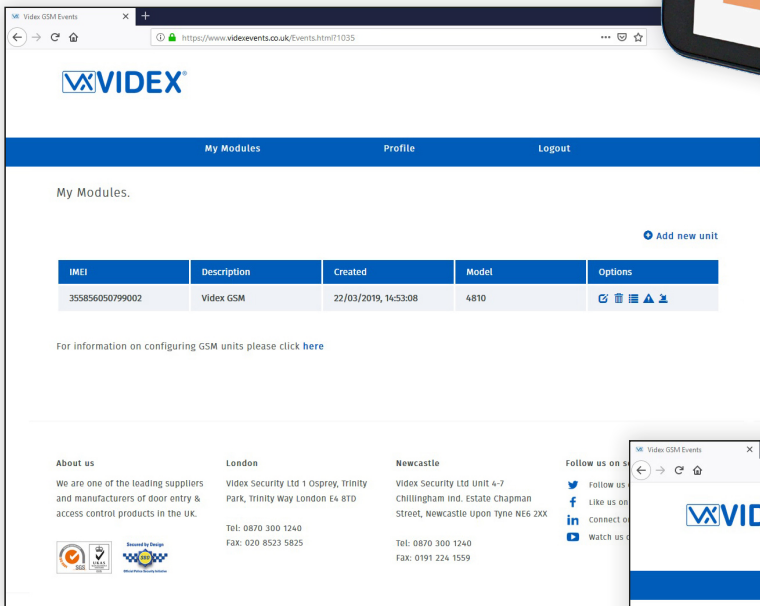
Additionally, email alerts can be setup when important events take place. These events can also be set for certain times and days. For example an alert can be set to send an email should the door or gate be opened at times when access is not permitted or unusual.

The SIM card used within the 4G GSM PRO intercom requires a data package to be included in order to send the events to the server. Setup of the system only requires a few short steps and help on this can be found once registered and logged in.

**Further details on how to register an online profile for the events application can be found at: [www.videxevents.co.uk](http://www.videxevents.co.uk)**



**Remotely monitor events in real-time and online via Smartphone, Tablet or PC.**



**Colour coded events list making it an easy and convenient way to keep track of calls.**

## Programming via PC

The GSM SK PC software is a versatile GSM programming software that can be used as an alternative method to program the 4G GSM PRO intercom.

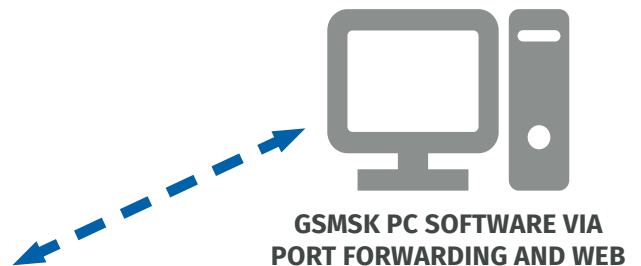
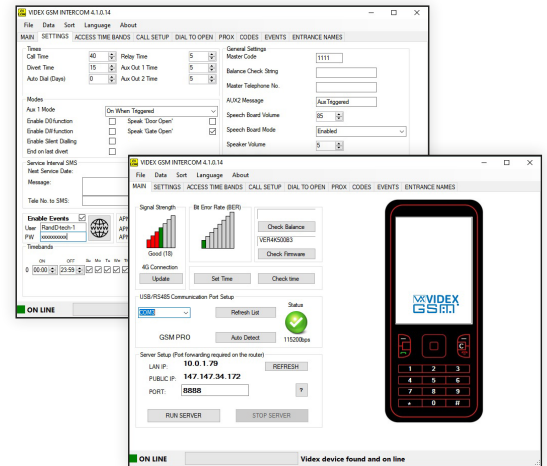
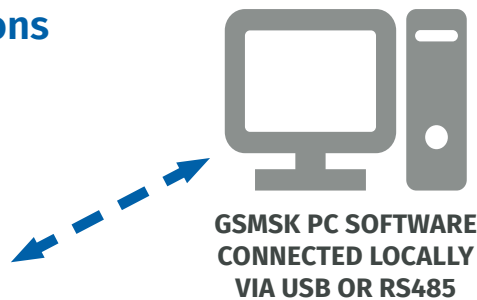
The main advantage of using the software is the ability to program several GSM features in a single upload action to the GSM intercom instead of having to program individual features one by one.

For example multiple telephone numbers (primary number and 3 diverts) can be programmed for all call buttons in a single upload to the 4G GSM PRO intercom. This function is particularly useful on large GSM installations where there may be several users.



## GSM SK PC Programming Options

GSM4KCR-1S/4G/M



WEB BROWSER PROGRAMMING FEATURE



**Program multiple Access Control Timebands and Access Levels in a single upload to the GSM intercom.**

## GSM SK Key Features

- Setup several of the GSM's settings including time parameters (call time, divert time, auto dial function, relay output, auxiliary 1 and auxiliary 2 output times).
- Program the GSM's general settings including the master code (4 digit pin), the balance check string (only applicable for certain networks pay-as-you-go SIM cards), master telephone number and auxiliary 2 message.
- Set the operational mode of auxiliary output AO1 on the GSM intercom (6 optional modes available).
- Enable or disable the GSM's speech annunciation and includes the speech board's volume control settings.
- Adjust the GSM's microphone and speaker volume settings.

- Program a DTMF tone and setup the DTMF tone delay time after a call is answered (for the primary number and first divert number for button 1 only on the GSM intercom).
- Enable or disable the GSM's onboard proximity reader and also configuring the reader to check for 2, 3 or 4 bytes (depending on the fobs/cards being used).
- Program the primary number and 3 divert numbers for multiple users (up to 50 call buttons) in a single upload as well as multiple dial to open numbers (000-999) including any access levels they may have.
- Program up to 400 permanent access codes, 32 temporary access codes (between 1 and 255 hrs) after which time will automatically be deleted.
- Program up to 1000 (000-999) proximity fobs/cards.
- Store a single timeband for all call buttons to be active for.
- Setup 10 access control timebands for the dial to open numbers, access codes and proximity fobs/cards including the assignment of up to 10 access levels for the dial to open numbers, access codes and proximity fobs/cards.
- Program up to 10 free access timebands to activate the GSM's relay, or either of the auxiliary outputs with a momentary or latching output.
- Enable or disable additional features including: Dial "0" on answer feature, press "#" button function, silent dialling mode and the end on last divert feature.
- Setup a service interval SMS message allowing for a brief message to be setup and automatically sent on a specified date to a programmed mobile number.
- Enable the APN feature that allows the GSM module's events to be monitored in real-time using Videx's remote web browser events application (an online profile registration is required for the APN feature to work, simply follow the setup instructions at [www.videxevents.co.uk](http://www.videxevents.co.uk)).
- Remotely program the GSM intercom "over the air" (using the GSMSK PC software) without the need to actually connect a PC or laptop directly to the GSM intercom via the USB or RS485 connections.
- Check the GSM intercom's current firmware version and update it to the latest version if and when required.
- Check the GSM's signal strength that also indicates a 2G, 3G or 4G network connection.
- Search, download, save, view and print up to 4000 stored events from the GSM intercom.



## 4G GSM PRO Modules

The 4G GSM PRO intercoms are manufactured in the popular 4000 series modular range with a new sleek and elegant style speaker grill with 0, 1 or 2 button module options that also incorporates a built-in proximity reader. The modules are available in a matt 316 grade stainless steel (suffix/**M**) or a gun metal grey finish (suffix/**BL**).

The GSM modules front fascia includes DDA compliant call progress LED's - "busy", "call", "speak" and "door open" with accompanying reassurance tones as well as speech annunciation to assist the caller in every step of the call process.



955/T



955/B



955/R



955/Y



955/G



955/C

The built-in proximity access reader is located behind the lower nameplate window for button 1 and is compatible with the Videx proximity key fobs **955/T, 955/B, 955/R, 955/Y, 955/G** and Videx proximity card **955/C**.

On the rear of the GSM module is a plug-in IDC connection which allows the new style 4000 series IDC button expansion modules (**4042 - 4045** and **4042D - 4045D**) to be linked using **CFL17** and **CFL45** IDC ribbon cables. Alternatively the button matrix terminals **a-g** and **1-8** from previous GSM PRO designs is included allowing for the older style 4000 series button expansion modules (**4842 - 4845** and **4842D - 4845D**) to be connected using conventional wiring.

Other terminal connections include 12Vdc power input, two auxiliary outputs (AO1 and AO2), dry contact relay outputs (NO, CO and NC) which can be programmed to trigger momentarily or to latch and RS485 bus connections (A, B and 0V) which can be used to network the GSM module with **4850R** proximity expansion readers and/or **4903** keypads (with up to 8 devices in total on the RS485 bus).

Another feature on the rear of the module is a micro USB port which can be used to connect the GSM unit directly to a PC allowing it to be programmed using the **GSM SK** PC software. The RS485 bus connections can also be used as an alternative means of programming the GSM module with the PC software (when connected via Videx's **481** USB/RS485 converter).

Also on the rear of the GSM module is a female SMA bulkhead input for connecting the **434** GSM antenna, a nano SIM holder, and a red network status LED to indicate:

- when the GSM module is not connected to the network or powered down.
- when the GSM module is searching for the network or in a call.
- if the GSM module is registered to a 2G , 3G or 4G network.

### 4G GSM PRO Audiokits

The 4G GSM PRO audiokits are available as 1 button flush kits, **GSM4K-1/4G**, up to 12 button flush kits, **GSM4K-12/4G**, or 1 button surface kits, **GSM4K-1S/4G**, up to 12 button surface kits, **GSM4K-12S/4G**. 4G GSM PRO audiokits are also available with **4903** keypads, 1 button flush kits, **GSM4KCR-1/4G**, up to 12 button flush kits, **GSM4KCR-12/4G**, or 1 button surface kits, **GSM4KCR-1S/4G**, up to 12 button surface kits, **GSM4KCR-12S/4G**.

GSM4K-1/4G/M



GSM4K-1S/4G/M



GSM4K-1/4G/BL



GSM4K-1S/4G/BL



Each audiokit includes a 4000 series front support frame in a gun metal grey finish and comes with the appropriate GSM module (**4810-0/4G, 4810-1/4G** or **4810-2/4G**) and appropriate button modules (**4043, 4044, 4045...etc.**) depending on the audiokit. The choice of two finishes available for the modules within the audiokits: matt 316 grade stainless steel (suffix/**M**) or a gun metal grey finish (suffix/**BL**).

The audiokits also include a **HDR-15-12** slim line 12Vdc, 1.25A power supply and **434** GSM antenna (including L bracket and appropriate fixings).

Model	System	Description
GSM4K-1/4G/M	4000 series modular 4G GSM audiokit <sup>*1</sup>	1 button 4K series 4G GSM kit (matt 316 finish, flush)
GSM4K-1S/4G/M		1 button 4K series 4G GSM kit (matt 316 finish, surface)
GSM4K-2/4G/M		2 button 4K series 4G GSM kit (matt 316 finish, flush)
GSM4K-2S/4G/M		2 button 4K series 4G GSM kit (matt 316 finish, surface)
GSM4KCR-1/4G/M		1 button 4K series 4G GSM kit with remotely programmable code lock (matt 316 finish, flush)
GSM4KCR-1S/4G/M		1 button 4K series 4G GSM kit with remotely programmable code lock (matt 316 finish, surface)
GSM4KCR-2/4G/M		2 button 4K series 4G GSM kit with remotely programmable code lock (matt 316 finish, flush)
GSM4KCR-2S/4G/M		2 button 4K series 4G GSM kit with remotely programmable code lock (matt 316 finish, surface)
4810-0/4G/M	4000 series 4G GSM modules <sup>*2</sup>	4000 series 0 button 4G GSM PRO module with built-in proximity (matt 316 finish)
4810-1/4G/M		4000 series 1 button 4G GSM PRO module with built-in proximity (matt 316 finish)
4810-2/4G/M		4000 series 2 button 4G GSM PRO module with built-in proximity (matt 316 finish)
4903/M	4000 series code lock, proximity and button modules <sup>*3</sup>	4000 series remotely programmable code lock module with back-lit keys (matt 316 finish)
4850R/M		4000 series remotely programmable expansion proximity reader module (matt 316 finish)
4842/M to 4845/M		4000 series button modules (2, 3, 4 and 5 buttons), matt 316 finish
4842D/M to 4845D/M		4000 series button modules (4, 6, 8 and 10 buttons), matt 316 finish
4042/M to 4045/M		4000 series button modules with IDC connection (2, 3, 4 and 5 buttons), matt 316 finish
4042D/M to 4045D/M		4000 series button modules with IDC connection (4, 6, 8 and 10 buttons), matt 316 finish
4851 to 4853		4000 series flush, surface back boxes and rainshields
4881 to 4889	4000 series surface back boxes (1 - 9 module)	
4871 to 4879	4000 series flush rainshields (1 - 9 module)	
4891 to 4899	4000 series surface rainshields (1 - 9 module)	
434	GSM system accessories	4G GSM antenna including magnetic base, L bracket and fixings
434/BLOCK		4G GSM block antenna (50 x 117 x 38 mm) including fixings
434/HG/5M		4G High Gain GSM antenna with 5m cable length (inc. right angled SMA adaptor)
434/HG/15M		4G High Gain GSM antenna with 15m cable length (inc. right angled SMA adaptor)
HDR-15-12		Slim line 12Vdc, 1.25A power supply
955/T		Videx proximity fob (EM format 125kHz), blue
955/B		Videx proximity fob (EM format 125kHz), black
955/R		Videx proximity fob (EM format 125kHz), red
955/Y		Videx proximity fob (EM format 125kHz), yellow
955/G		Videx proximity fob (EM format 125kHz), green
955/C		Thin 0.75mm Videx proximity card (EM format 125kHz)

<sup>\*1</sup> (4G GSM audiokit<sup>s</sup> also available in gun metal grey, suffix **/BL** to the kit part code, e.g. **GSM4KCR-2/4G/BL**. 3 up to 12 button 4G GSM audiokit<sup>s</sup> also available).

<sup>\*2</sup> (4G GSM modules also available in gun metal grey, suffix **/BL** to the module part code, e.g. **4810-2/4G/BL**).

<sup>\*3</sup> (4000 series modules also available in gun metal grey, suffix **/BL** to the module part code, e.g. **4850R/BL**).



4810-0/4G/BL

4810-1/4G/M

4810-2/4G/BL

Available in a matt 316 grade stainless steel or a gun metal grey finish.



#### SOUTHERN OFFICE

1 Osprey, Trinity Park,  
Trinity Way, London,  
E4 8TD  
T 0370 300 1240 • F 0208 8523 5825

#### NORTHERN OFFICE

4-7 Chillingham Ind. Estate,  
Chapman Street,  
Newcastle Upon Tyne, NE6 2XX  
T 0370 300 1240 • F 0191 224 1559



sales@videxuk.com • www.videxuk.com